

How to use CoreIDRAW® 'Embroidery plug-in' for EOS v3 / Stitch & Sew v2 / TES v3 / TES – ESP

'Embroidery plug-in' is an add-on designed for CoreIDRAW® that will allow you to directly import any graphic loaded into any of the COMPUCON software products – either 'EOS 3.0', 'Stitch & Sew 2.0', 'TES 3.0' or 'TES – ESP'.

Use of it is very easy and direct while you can be sure that the artwork from CoreIDRAW® will be transferred into your embroidery software exactly as it is, maintaining 100% of vector information.

What is more it is absolutely free for you to download and install, no extra cost involved!

The plug-in also contains some additional time saving features allowing you to automatically take an image open in CoreIDRAW® and convert it to embroidery with just one click of a button.

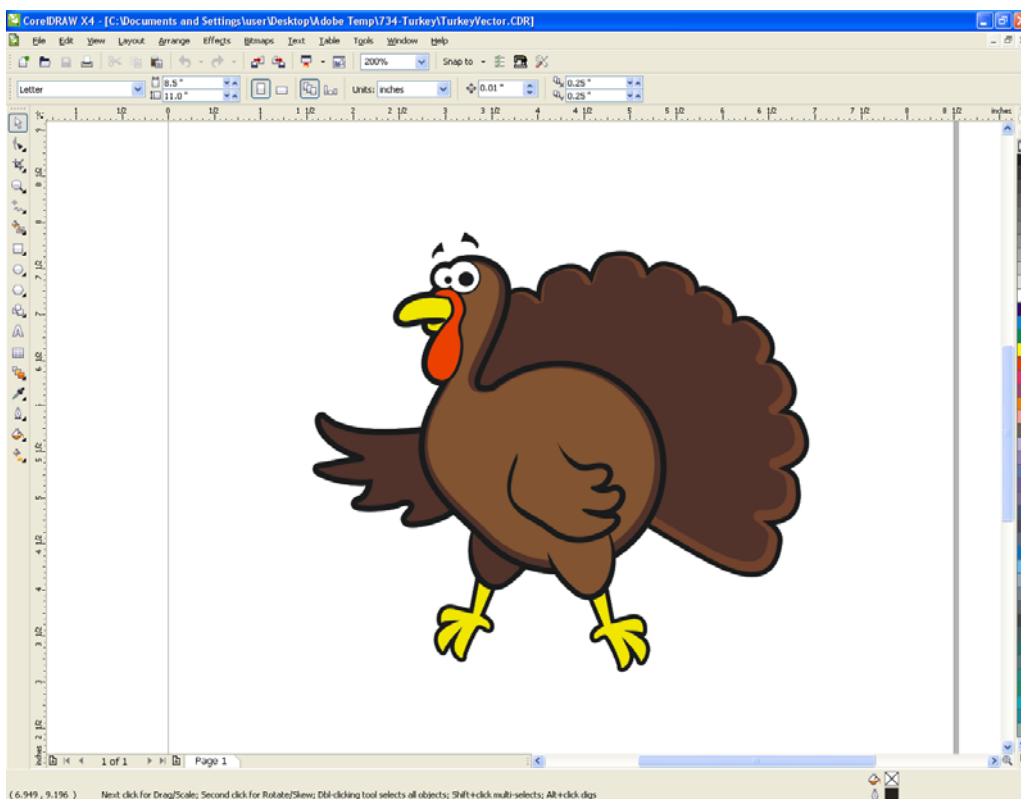
The following steps will guide you through the use of this very special plug-in for CoreIDRAW®.

Note:

Before proceeding through the following steps make sure that you have downloaded and installed the 'Embroidery plug-in', you can get this [by clicking on this link here](#).


The 'Embroidery Plug-in is suitable for CoreIDRAW® X3 and X4 versions only. Please note that all CoreIDRAW® screen captures in this guide come from X4 version.

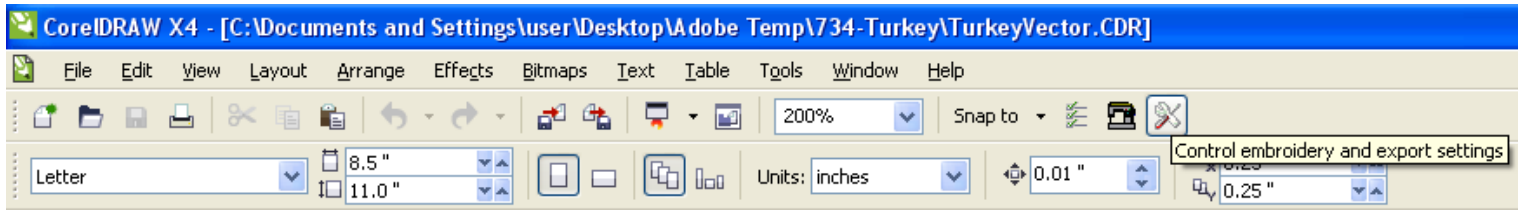
- First step is of course to have CoreIDRAW® open and the graphic you would like to transfer loaded.



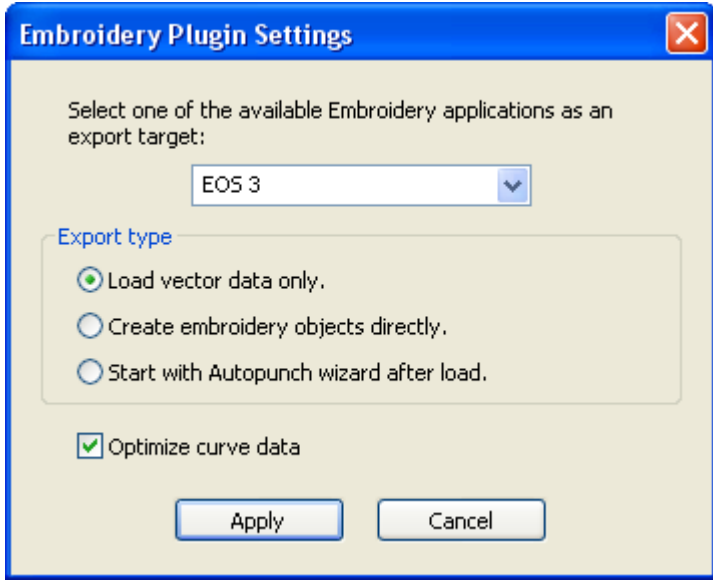
We will use the above sample for our example.

You can transfer this directly to any of the following COMPUCON embroidery software products you have installed, either 'EOS 3.0', 'Stitch & Sew', 'TES 3.0' or 'TES – ESP'.

- From within CoreIDRAW® go to the top toolbar and choose the settings  icon.



- The following dialogue box will appear




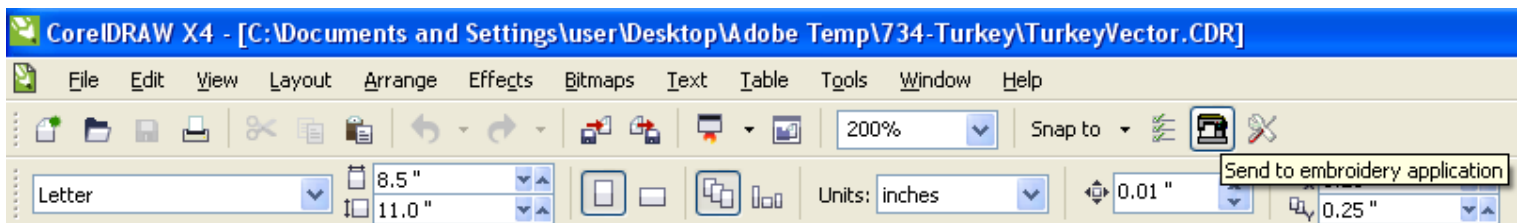
from which you can preset the COMPUCON embroidery software program you would like to transfer the graphic to, while also choosing amongst three different way of direct loading :

1. to load the vector data directly into the COMPUCON software without any further action.
2. to load the vector data and have this automatically made into embroidery, thus converting an image into embroidery with just one click.
3. to load the vector data into COMPUCON's 'AutoPunch' wizard, allowing for direct conversion of the graphic into embroidery while also having the added option of presetting a variety of parameters that will provide even better embroidery results.

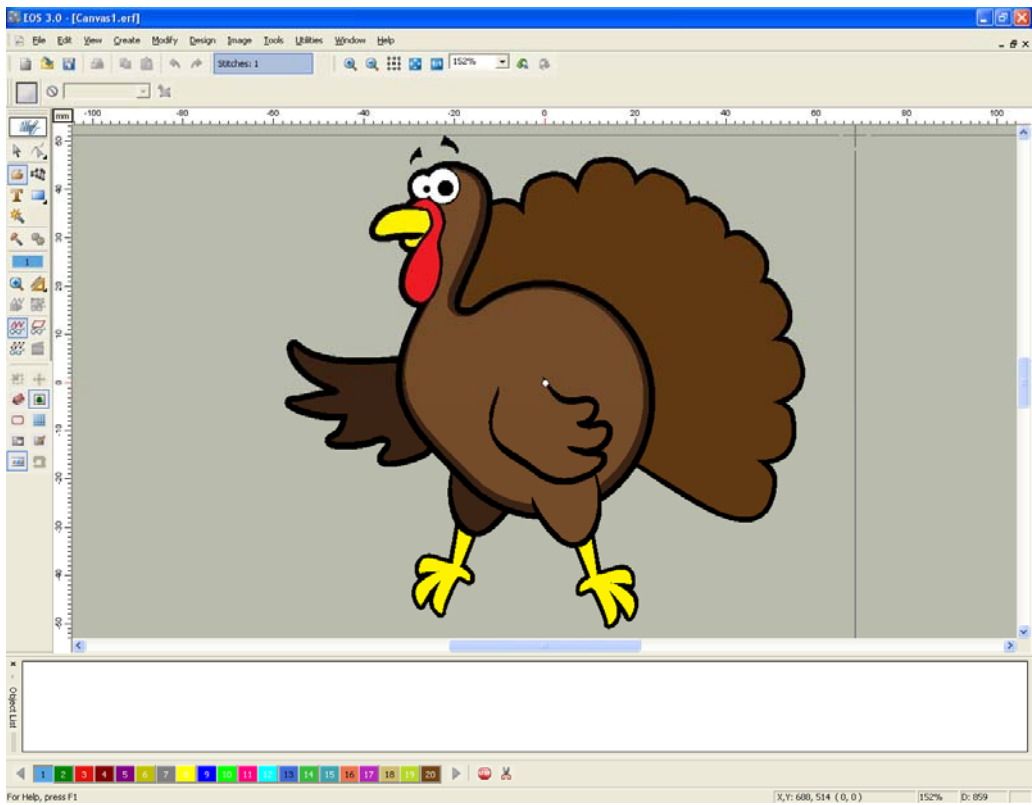
'Optimize curve data' when checked optimizes the vector data of the vector image making points and outlines most suitable for embroidery objects.

Click on 'Apply' to have the selected settings apply.

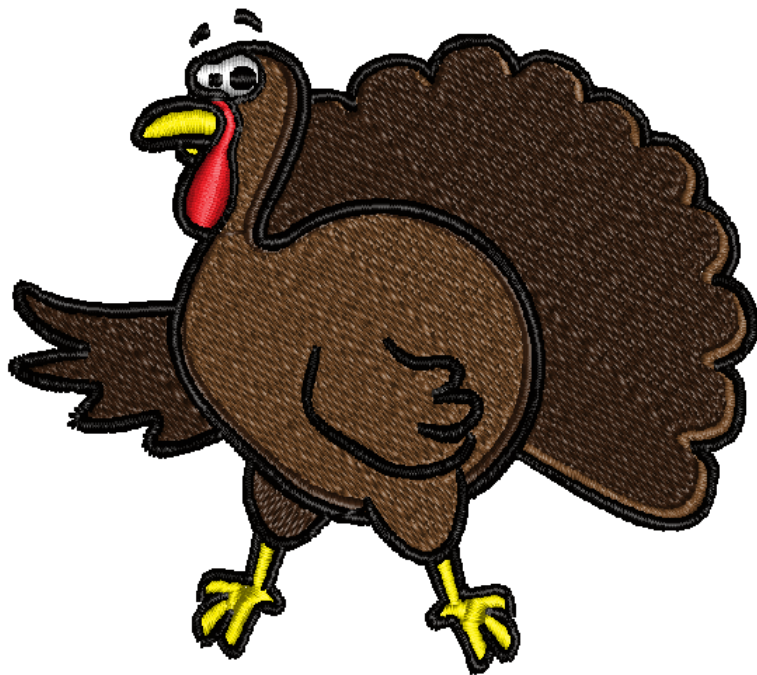
- Finally, from within CoreIDRAW® go back to the top toolbar and choose the Send  icon



and the graphic image on screen will directly load into the embroidery application chosen.



In case you opted for automatic embroidery creation it will even go one step further by transforming the image into an embroidery design!



That's it, that simple and quick, go and [download it now](#) in case you haven't yet!

**** Important note for users running on Vista***

Make sure to run the software as administrator for the plug-in to work correctly.

