



EOS
EMBROIDERY OPERATING SYSTEM
:just imagine



User's Manual
VIEWER



Quick Start Guide

This guide is intended to give you an overview of the function of the program. The guide is arranged by section, Each section corresponds to the different pulldown menus in the program.

FILE MENU

New – Starts a New Blank Canvas

Open- Allows you to import designs into the program

Viewer will open most Stitch formats such as DST, PES, XXX etc...

1. Click the “**File**” menu
2. Click “**Open design**”
3. Select the folder that contains your designs, it should appear in the “**Look In**” section at the top. .
4. On the line “ **File of Type**”, from the list of formats select “ **All Embroidery Files**”

Note: *If you know the format type (for example: .FDR, .DST, .XXX, .PES, etc.) you can select the exact machine format*

1. In the big white box where the file names appear, click **once** on the file name to preview. If correct, click “**OK**”

Close- Closes the current Design

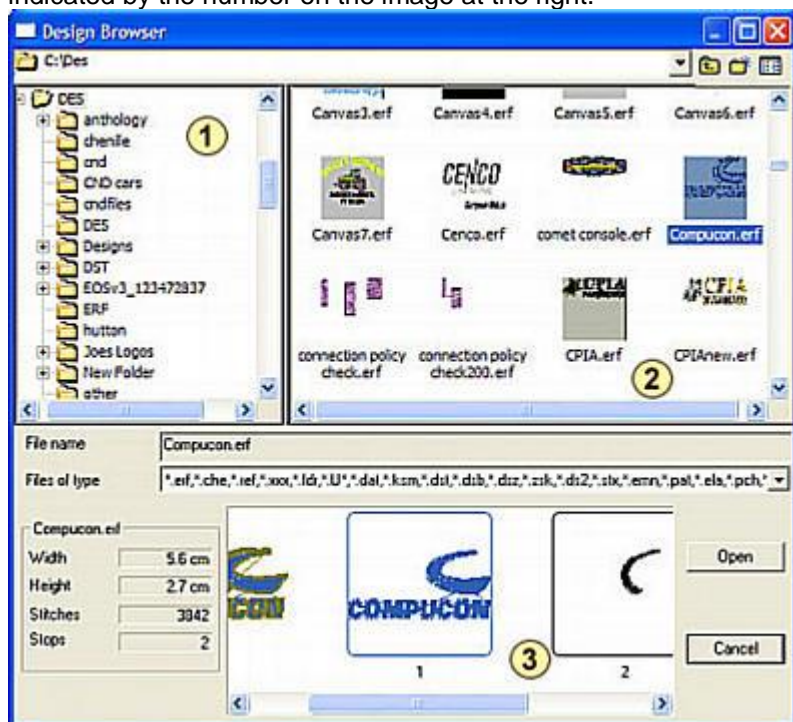
Save Design- This will save the current design and any changes you have made.

Save Design As- Allows you to save a copy of the current design under a different name or change its format.

Send As Mail- This feature will take the active design and attach it to an email message as a stitch file of the format you choose. It will also include a realistic image file in JPG format. This feature only works when an email account is set up on the computer. If you are using a web mail client such as Yahoo Mail, Gmail or Hotmail it will not be able to send.

Embroidery Anthology- Embroidery Anthology is a catalog of stock designs. There are currently 3 different catalogs available. The Embroidery Anthology can be purchased from www.embhq.com or www.embmarketplace.com

Design Browser- The Design Browser allows you to preview designs stored on any device attached to your computer. The Design Browser automatically generates a thumbnail preview and a color separation preview. The Design browser screen is divided up into areas as indicated by the number on the image at the right.



1 Navigation Window. This area is used to find the folder or device that contains the designs. Open the folder to view the designs in the preview window (2)

2 The Preview Window. This window displays all of the designs in the selected folder. The system is set up by default to view all files of any embroidery type, but can be filtered to individual types from the "Files of Type" window below.

3 Design Information Window. This area displays specific information such as size, number of colors and number of stitches for the selected design. When a design is selected from the Preview Window a larger icon as well as the color separations of the design are displayed in this window.

Print- The Print page will allow you to print a handy reference of your design. The color sequence is displayed at the bottom with information such as size, stitch count etc.

There is also an option to print the color separations by checking the “Color Block Analysis” at the top

EDIT MENU

Undo- This function will reverse the last process that was performed.

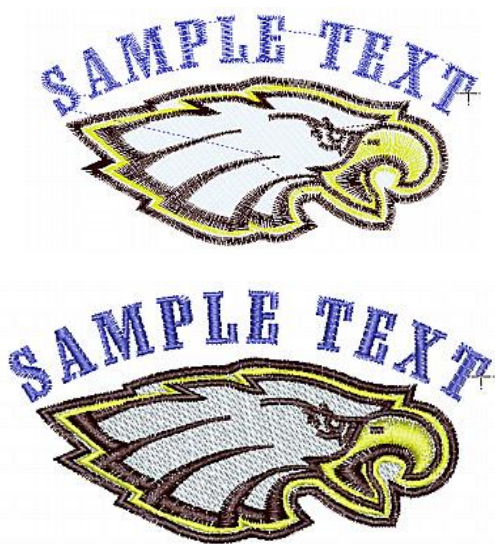
Redo- Reverse the Undo Function

VIEW MENU

Realistic View- Displays the design in realistic 3D stitch data.

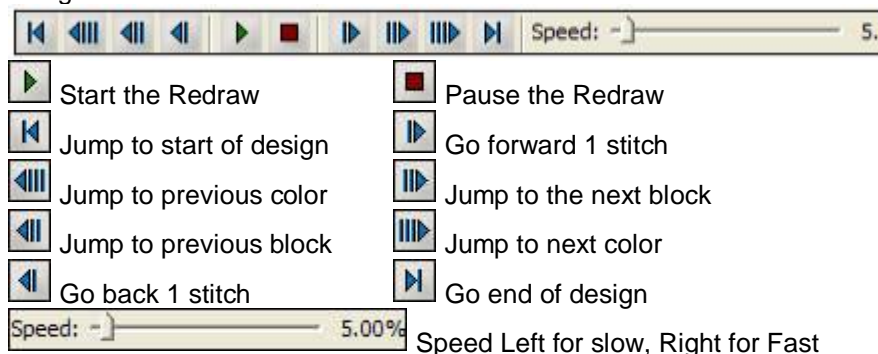
Jump stitches and connectors after trim codes are not displayed as these would not sew in an actual design. Notice the difference between the 2 images. The image

on the top is shown in flat stitches, notice the connector (dashed) lines between the elements. The image on the bottom is displayed in Realistic mode. The connector stitches are not shown because the letters and elements would be trimmed this, these stitches would not sew.



The connectors are important to see during the editing and digitizing process so you can easily see the sequence. However, when you want to see how your design will actually sew, the Realistic view is much better.

Redraw Design- Activates the Controlled Redraw function which allows you to redraw the design in a slow and controlled way. The Controlled redraw toolbar contains controls for determining how the design is redrawn.



Zoom - The Zoom function allows you to magnify or reduce the image or design on the screen.

Full Screen- Allows you to view the design in the maximum space by hiding the normal Windows header and taskbar. When Full Screen mode is activated a small toolbar will be displayed on the screen. Click this icon to return to normal view mode.



Show/Hide Stitch Points- This option will display a small dot on the screen for each HIT or JUMP stitch.

Show/Hide Hoop- This feature will show or hide an on screen hoop file. If no hoop is displayed when this is selected, the Select Hoop option will be displayed allowing you to choose from a list of pre-made hoops

How to Display your design in a Hoop

1. Click on the **"Tools"** menu. Then click on **"Select Hoop"**
2. From the list of hoops, select the hoop you would like to use.
3. Click **OK**
4. Click on the **"View"** menu. Then click on **"Show / Hide Hoop"** to hide or view the on screen hoop

Show Hide Grid- Displays an on screen Grid

CREATE MENU

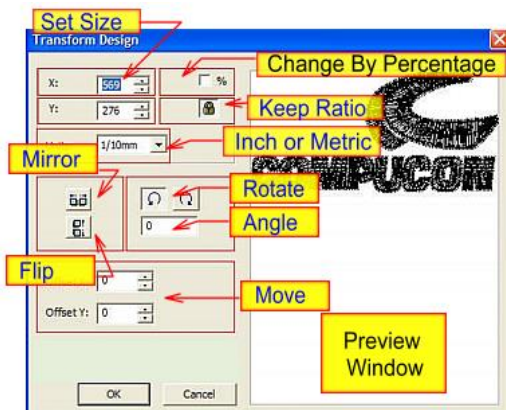
Redraw Design- The Library contains designs stored into different catalogs. These are the Free Designs that you can get simply by registering your Viewer program.

MODIFY MENU

Change Size- This control can be used not only to resize the design, but also will flip, rotate or mirror the design as well.

How to Change the Size of a Design

1. Open the design if not already opened
2. Click on the **"Modify"** pulldown Menu
3. Select **"Change Size"**
4. **"X"** is the width and **"Y"** is the height of your design. You can change either value or check the box for **" % "** and change the percentage, the other value will change automatically to retain proportion.
5. By default the system is set to resize proportionally, If you want to resize X and Y independent of one another, click the Lock icon to release the proportional lock.



Note: This procedure can be used on any file type; best results are achieved using outline files. Stitch files such as dst, fdr, and exp can also be resized. However, when resizing a stitch file, The stitch density will not change, if you want to resize with stitch adjustment contact a Compucon representative, we have a full range of affordable products that will accomplish this.

TOOLS MENU

Show/Hide Stitch colors.

This will display the designs colors in a list. From there you can assign colors or change codes

Designs are created with Stops or Needles to indicate color changes. In practice, there is no real difference between a Stop and a Needle code, as Stops are Needle 0.

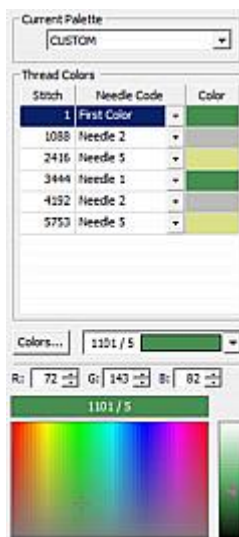
The Viewer program will automatically display the next color in sequence to illustrate where the stops in a design occur.

As a rule, you should try not to mix needles and stops in a design unless you want the Stop to act as a STOP function on the machine, for designs such as Applique. Mixing Stops and Needles usually results in confusion when trying to program the color sequence at the machine.

To avoid this confusion, you can assign the colors on the embroidery software using the Stitch Colors

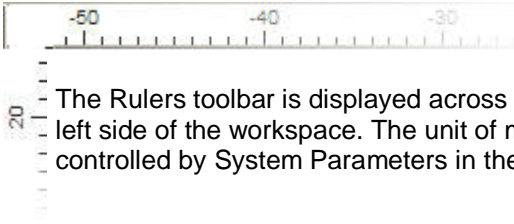
Assigning Colors to a Design

1. Click **"Tools"** menu
2. Select **"Show / Hide Stitch Colors"**
3. In the menu that appears, click the small down arrow next to each code listed to change, or delete
4. To change the actual color of an assigned color number, Click the Color block next to the code and choose a new color from the rainbow palette at the bottom



Note: You can choose from any manufacturer's palette listed at the top "Current Palette". If you choose a manufacturer's palette, you must click the "Colors" button to assign actual colors as your choices will be limited to those available from the manufacturer.

Show/Hide Rulers




The Rulers toolbar is displayed across the top and down the left side of the workspace. The unit of measurement is controlled by System Parameters in the Tools Menu.

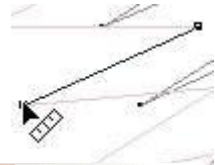
Show/Hide Scrollbars

The Scroll bars are displayed across the bottom and right side of the canvas.

The Scroll Bars will automatically be drawn depending on the design size. If the design is magnified to a point where it will not fit into the viewing area, scroll bars will appear.


Ruler

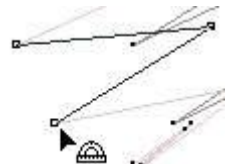
 On screen ruler used to measure actual distance. To use, activate the ruler, click and hold down the left mouse button and drag to measure distance. Distance, offset information is displayed in the task bar



Start: (-1193,-3567) End: (-1166,-3732) Distance: 10 (1/10mm) offset X: 27

Protractor

 The Protractor is used to measure angles. To measure an angle click first along some line you want to measure move the mouse along this line to the intersection of the angle, click again. This is your reference line, Move the mouse away from this line as the mouse is moved the angle between the reference line and the mouse's current location is continuously reported in the taskbar

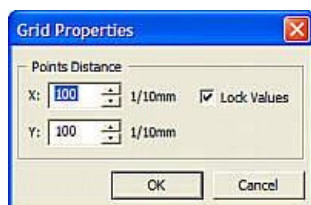


Start: (-18,82) Angular: (-8,83) End: (-13,76) Angle: 26.3 deg

Set Grid Size

Determines the size and shape of the on-screen grid. The grid display is controlled in the **View Menu - Show/How Grid** setting.

Use this form to determine the grid lines distance. a setting of 10 would be 1 mm, a setting of 254 would be 1 inch.



If the System Parameters is set to display in Inch, the grid settings will also be in inch

The grid is symmetrical by default but can be set to be rectangular by un-checking the Lock Values option.

Select Hoop

Hoop files are simulations of the embroidery hoops for your machine. The program comes pre-installed with many popular sizes. To display a particular hoop, choose the hoop you want from the list, a small preview will be generated showing your design in the hoop.

This process will allow you to quickly find the right hoop for your embroidery.

However, you may find it necessary to create your own hoop. The **Create Hoop** section will describe the process for creating any symmetrical hoop file you may encounter.

Create Hoop

Before we get started, you will need to determine the type of hoop you want to create. Hoops generally come in 3 shapes Circle, Rectangle and Rounded Corner Rectangle.

Once you have determined the shape, you will also need to know the size of the hoop. Most hoops manufactured will have the size stamped into them, this is normally near the adjusting screw.

If you are going to make a Rounded Rectangle frame, you will also need a Radius Chart. We have one you can download and print from the same page where you downloaded the viewer

Creating a Circular or Rectangle Hoop

This section is for creating a new circular hoop file for your system.

The first step is to choose which type of hoop you are making. In this case, select **Circular or Rectangle**.

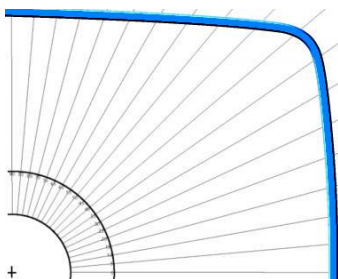
- Input a **name** for your hoop, and a **comment**, The comment will appear in the Select Hoop page to allow you to choose the new hoop.
- Click **Next**
- Input the **diameter** (circular hoops) or the dimensions for rectangle hoops and the **safety margin**. (usually between 5 and 10) That's all the information the Wizard needs to create your new hoop

Creating a Rounded Rectangle Hoop

The Rounded Rectangle and Freehand options require more input to create the hoop. This section will cover how you can create virtually any symmetrical hoop using this wizard. You will need the [Radius Chart](#) from the Utilities page to create these hoops

Print out the radius chart and lay it on a flat surface

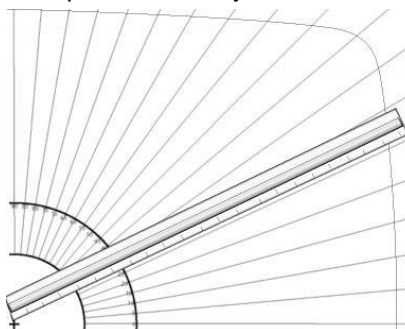
Align the top right quarter of the hoop over the radius chart aligning with the 0 and 90 degree lines as shown in the image Most hoops will have marks on the inside edge to indicate center of the hoop. Align these marks with the 0 and 90 degree lines



Use a pencil to trace the inside edge of the hoop, draw directly on the radius chart, intersect all the angle lines.

Remove the hoop.

Using a cm ruler, measure the distance in CM from the lower left corner on the radius chart to the point at which each radius line intersects the hoop line. As shown. Note these measurements you



will need them in when you create your hoop

Click **Tools > Select Hoop > New Hoop**

Select **Rounded Rectangle** or Freehand,

Input a Name and Comments,

Click **Next**

Input the basic dimensions of the hoop. If you do not know the radius, leave it at the default. The next step will take care of this.

Click **Next**.

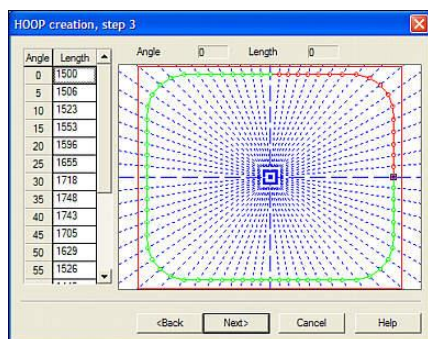
Input the values for each radius line measured earlier. Use 1/10 mm values.

Example. If you measured 10.3 cm, the input value you would need to type would be 1030.

Click **Next**

That's all the information the Wizard needs to create your new hoop.

Click **Finish**

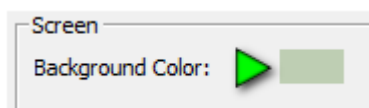


System Parameters

This is where you can set the units of measurement or the background color.

To change the language simply choose which language you want to use from the drop down.

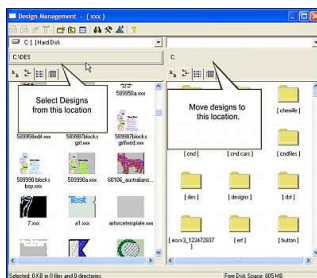
To change the background color, click the small color block as shown, and select any color you wish to use



UTILITIES MENU

Design Management.

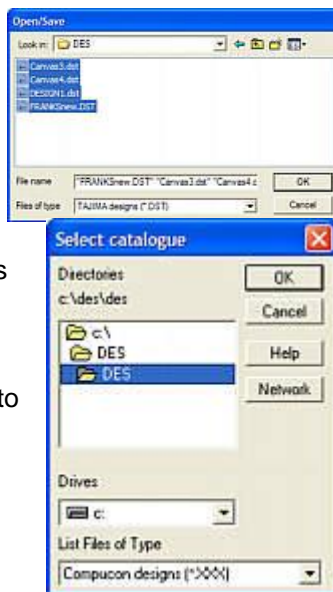
Design management is used to move, copy or mass delete files. The utility is split into 2 sides. The left side window is used to select designs. The right side is used to locate the destination directory for the Copy and Move functions.



Convert Designs.

This option will do a batch conversion of embroidery designs on your computer from one format to a specified different format

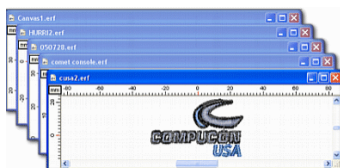
- Select the **Utility Menu**
- Select **Convert Designs**
- Select the design you want to convert (multiple designs can be selected utilizing the Shift or Ctrl keys)
- Click **OK**
- Select the location and file type you want to convert to
- Click **OK** The designs will be copied to the new location in the format specified



WINDOW MENU

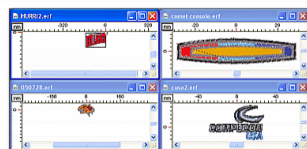
Cascade

Cascade arranges all open canvases in a layer to allow you to easily pick the canvas you want to use.



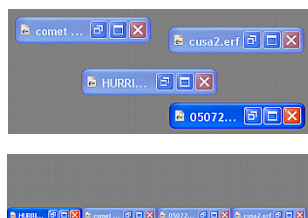
Tile

Tile arranges all open canvases into a thumbnail grid type preview to allow you to select the desired canvas.



Arrange Icons

If you have several designs open and minimized on the screen. This option will arrange them along the bottom of the canvas

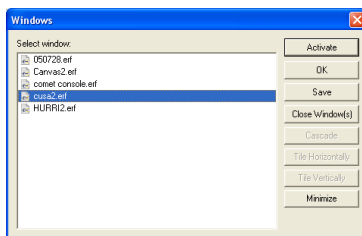


Toolbars

Allows you to select which toolbars you want shown or hidden

Widows

Allows you to manage all open designs. From this window you can choose to close, show (activate) or save any design.



How to Center a Design

Most embroidery designs are created with a start and end point in the center. If you remove or add to a design, this start point will likely no longer be centered. The system can re-center any design.

1. Click on the **“Design”** menu
2. Select **“Center”** the default of the system is set to move start/end point to the center.

HELP MENU

Internet Help

Register your Software and Get free designs

Register your viewer and you will receive a download link where you can download and install free designs into your Library under the Create Menu

Connect To

EOS3

Connects you to the EOS3 Product Web where you can view more information about the entire EOS3 product line

Embroidery Marketplace

Connects you to the marketplace where you can purchase designs, and other embroidery related items

Compucon

Connects you to the parent company website

**Thank you for downloading the EOS Viewer Program,
we hope you will find it useful**

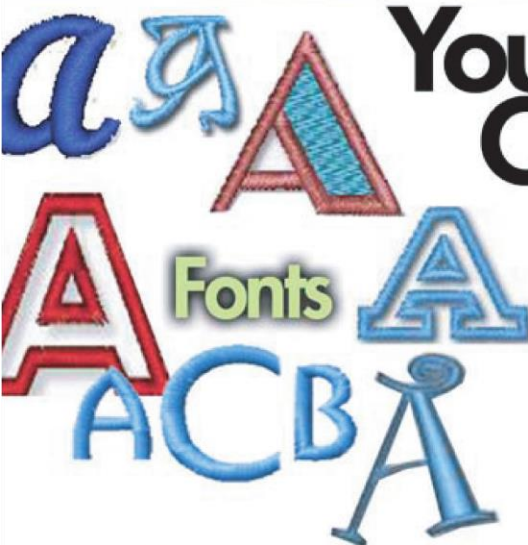
**Remember we carry a complete line of software that
can fit any budget.**

Contact sales@ebhq.com for more information.



Embroidery
Marketplace

Expand Your Business Capabilities *Online!*



Choose from thousands
of quality designs.

Over 180 font styles

Register & download
free designs!



Software



Check out our website for all your design and font needs

www.embmarketplace.com